

Franklyn James



Jack Clow Road

, London, E15 3AS

Asking Price £275,000

A well-presented two-bedroom purpose-built flat located on the popular Jack Clow Road, offering comfortable living in a convenient London location.

The property features two good-sized bedrooms, providing plenty of space for professionals, couples, small families, or those looking for additional room to work from home. The flat also offers a bright and practical layout throughout, combining modern living with a welcoming feel.

Ideally situated, the property benefits from easy access to local shops, cafés, restaurants, and excellent transport connections, making commuting and getting around London simple and convenient.

This is a great opportunity for first-time buyers or investors looking for a well-located property with strong rental appeal and everyday practicality.

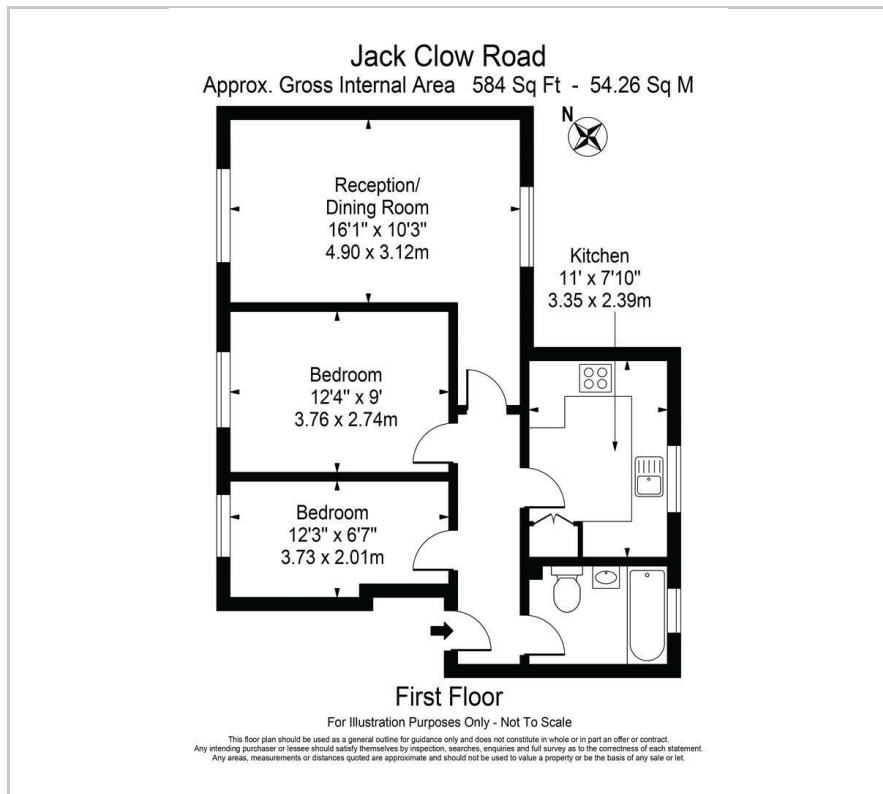
- Close proximity to train station
- Two double bedrooms
- Seperate Lounge and kitchen
- Communal garden
- First floor
- Chain free

Viewing

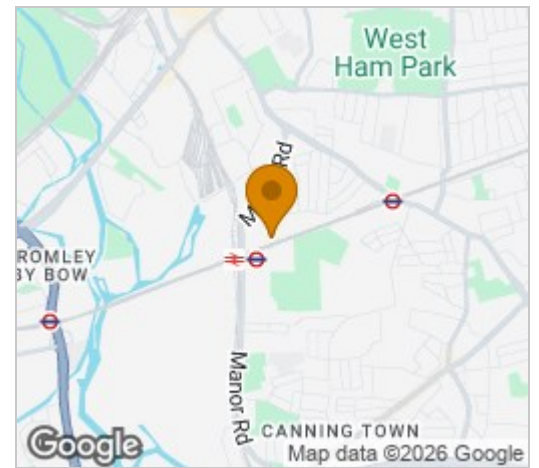
Please contact our Limehouse Sales Office on 02077911777 if you wish to arrange a viewing appointment for this property or require further information.



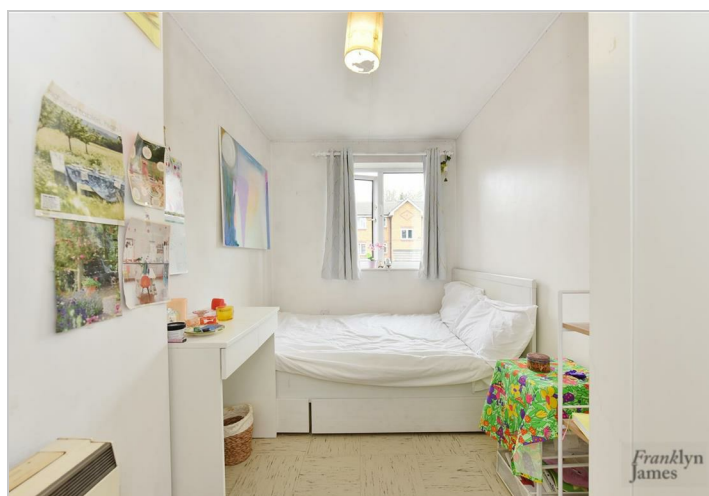
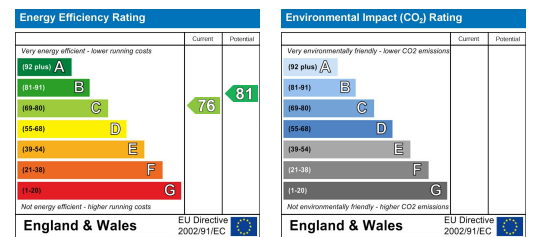
Floor Plan



Area Map



Energy Efficiency Graph



These particulars, whilst believed to be accurate are set out as a general outline only for guidance and do not constitute any part of an offer or contract. Intending purchasers should not rely on them as statements of representation of fact, but must satisfy themselves by inspection or otherwise as to their accuracy. No person in this firm's employment has the authority to make or give any representation or warranty in respect of the property.